

FY 2024 Capital Budget and Amendments to the FY 2023–2028 Capital Improvements Program Work Session

Montgomery County Board of Education
March 14, 2023

Agenda

- Recommendation for the relocation of Burtonsville Elementary School
- Recommendation for a boundary study scope to reopen Charles W. Woodward High School
- Follow-up from March 9 public hearing

Recommendation for the Relocation of Burtonsville Elementary School

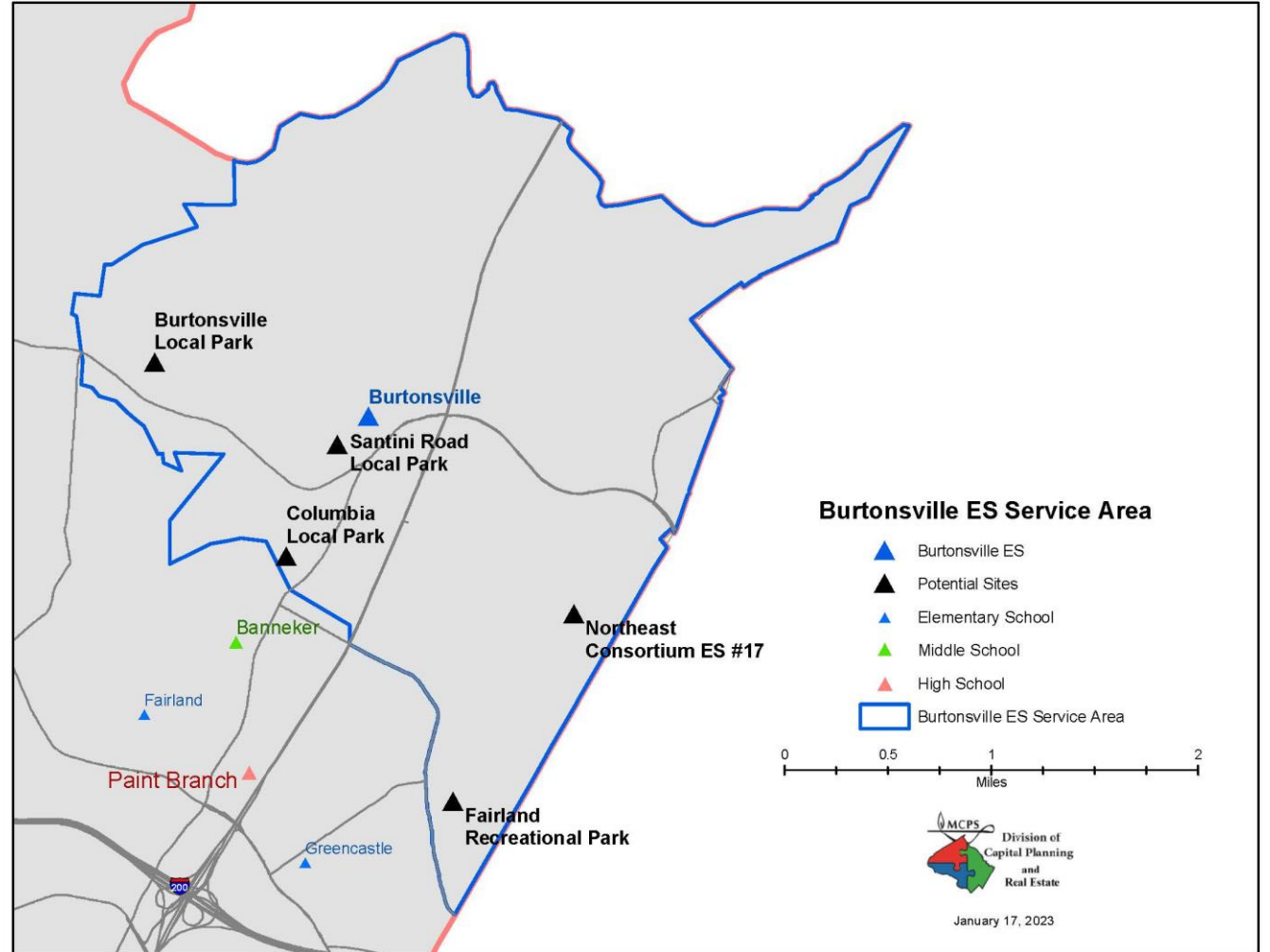
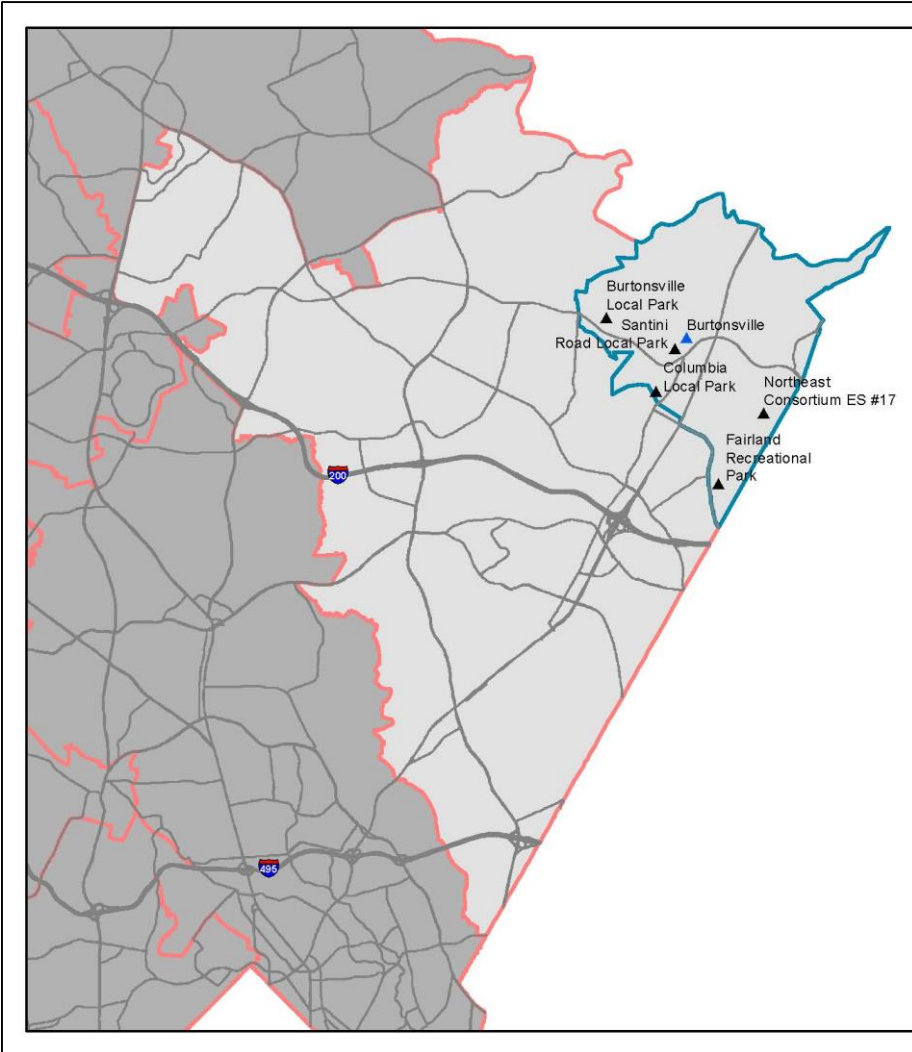
Superintendent's Recommendation

- After an analysis of the potential sites, the superintendent recommends relocating Burtonsville Elementary School to the Northeast Consortium Elementary School #17 site.
- This is a future school site, and therefore, no impact on existing amenities in the Burtonsville Elementary School service area.

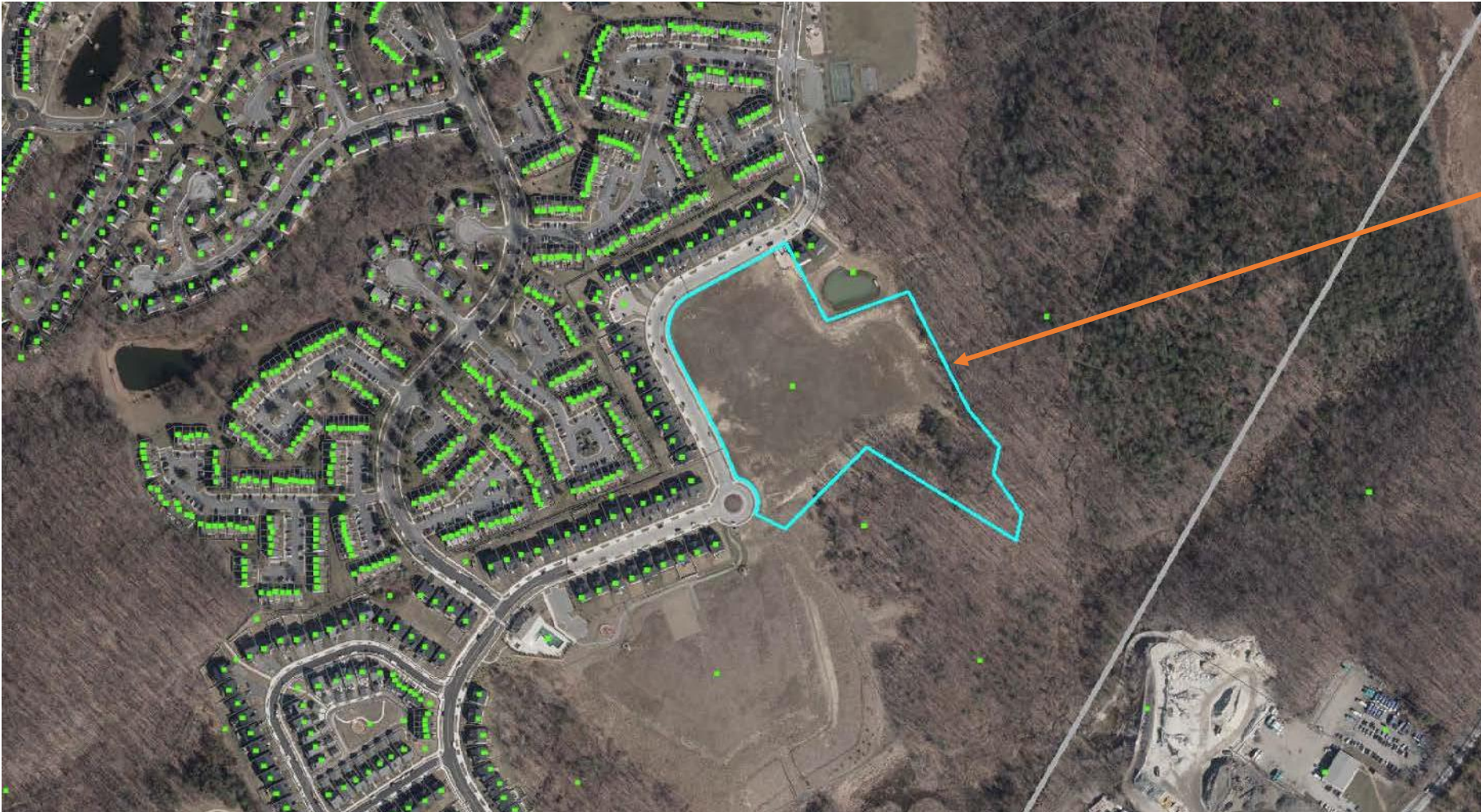
Next Steps

- If the site is approved by the Board of Education, the design process will begin and include the entire Burtonsville Community:
 - Architect selection process (spring/summer 2023)
 - Community engagement meetings (2023–2024 school year) for planning/design of the new elementary school
 - Detailed studies to evaluate transportation and access needs
 - Community dialogue regarding future use of the existing Burtonsville Elementary School building

Recommendation for the Relocation of Burtonsville Elementary School



Recommendation for the Relocation of Burtonsville Elementary School



Location of Northeast Elementary School #17

Discussion

Boundary Study Scope Recommendation for the Reopening of Charles W. Woodward High School

Recommendation

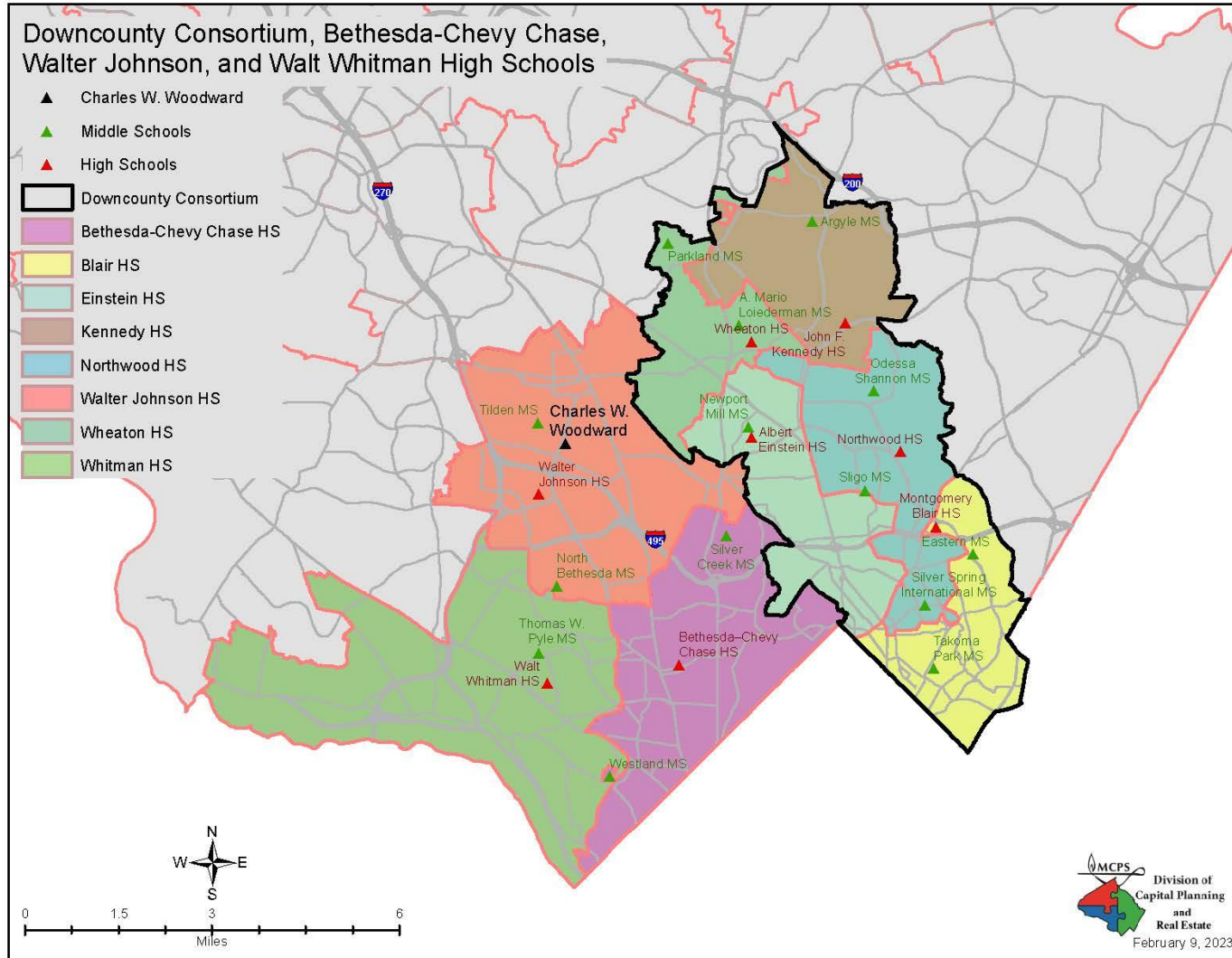
- After a review of student enrollment, demographic, geographic, and program information, the following is the superintendent's boundary study scope recommendation:
 - Include the following eight high schools:

Bethesda-Chevy Chase	Walter Johnson	Wheaton (DCC)
Montgomery Blair (DCC)	John F. Kennedy (DCC)	Walt Whitman
Albert Einstein (DCC)	Northwood (DCC)	

- Include the following 14 middle schools:

Silver Creek (B-CC)	A. Mario Loiederman (DCC)	Silver Spring International (DCC)	Tilden (WJ)
Westland (B-CC)	Newport Mill (DCC)	Sligo (DCC)	Thomas W. Pyle (Whitman)
Argyle (DCC)	Parkland (DCC)	Takoma Park (DCC)	
Eastern (DCC)	Odessa Shannon (DCC)	North Bethesda (WJ)	

Boundary Study Scope Recommendation for the Reopening of Charles W. Woodward High School



Boundary Study Scope Recommendation for the Reopening of Charles W. Woodward High School

Next Steps and Anticipated Timeline for the Boundary Study

- This boundary scope recommendation includes 8 high schools and 14 middle schools across 8 clusters; therefore, outside consultants will collaborate with MCPS staff to facilitate this process.
- Anticipated Timeline:
 - Spring 2023—Request for Proposal is released with approval by the Board in summer 2023
 - Fall 2023—MCPS staff/consultant prepare for community engagement process and provide stakeholders with meeting information
 - Early 2024–Fall 2024—Boundary Study process (community meetings, option development, feedback)
 - Early 2025—Boundary Report is released
 - Winter 2025 (February)—Superintendent’s recommendation is released
 - Winter 2025 (February–March)—Board work sessions, public hearings, action on boundary study recommendation.

Discussion

- Public Hearing Follow-Up and Discussion
- Capital Improvements Program—Next Steps